



# PLANNING DEVELOPMENT MANAGEMENT COMMITTEE



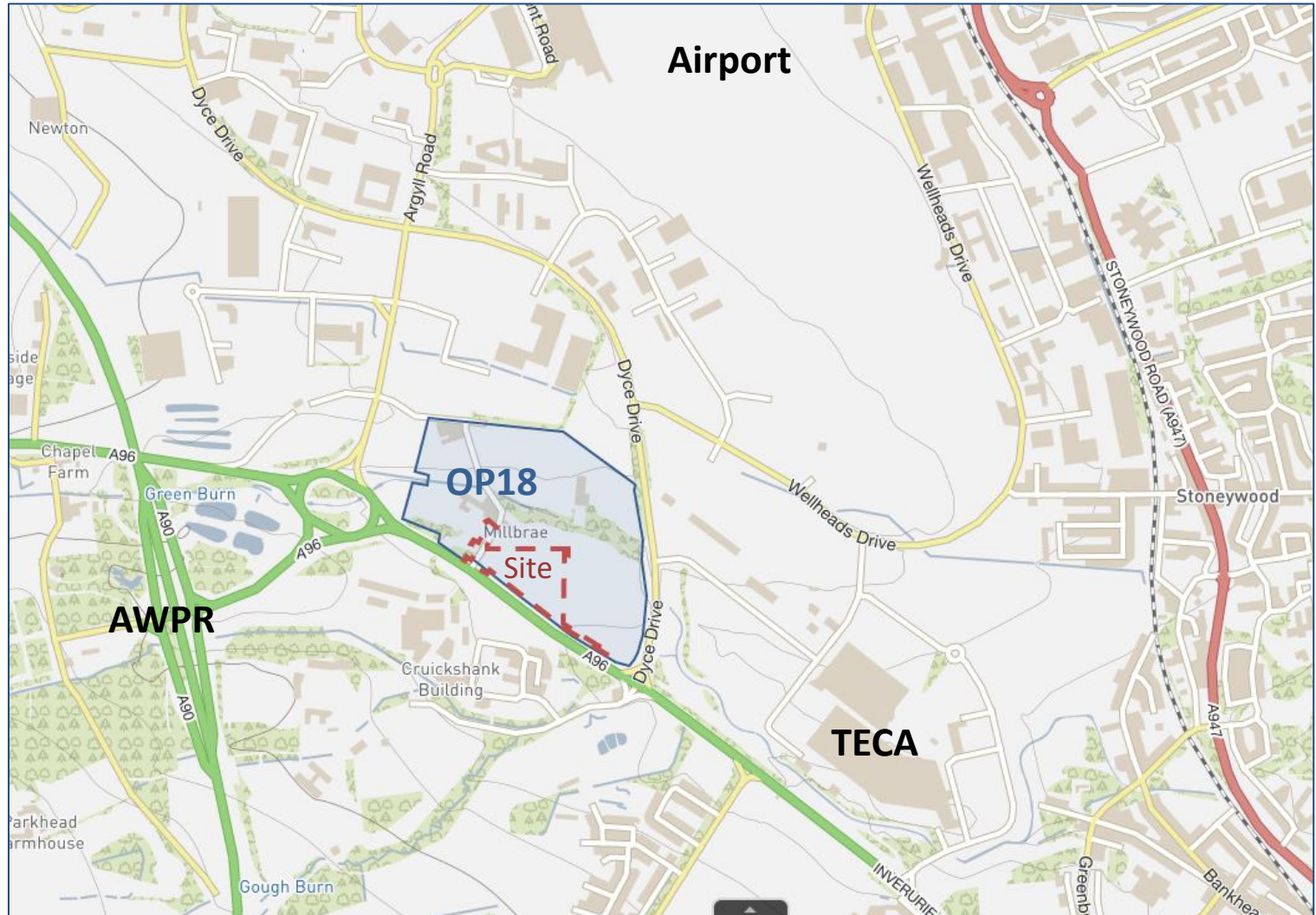
20 May 2021

Erection of food hub innovation facility  
(Seedpod) (class 4) with access, parking,  
landscaping and associated works

Land at Craibstone North and Walton Farm,  
Aberdeen

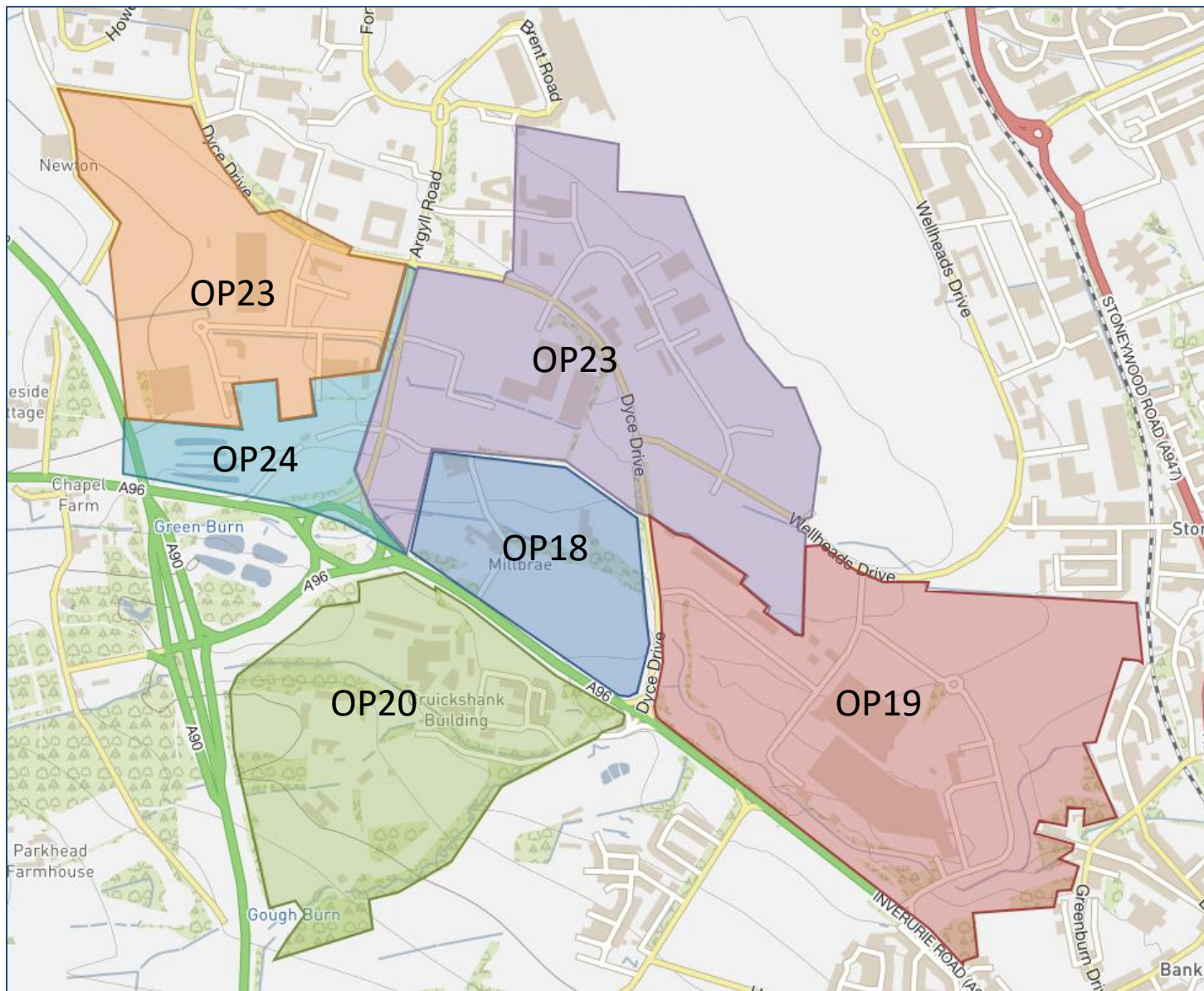
**Application reference: 210146/DPP**

# Site Location

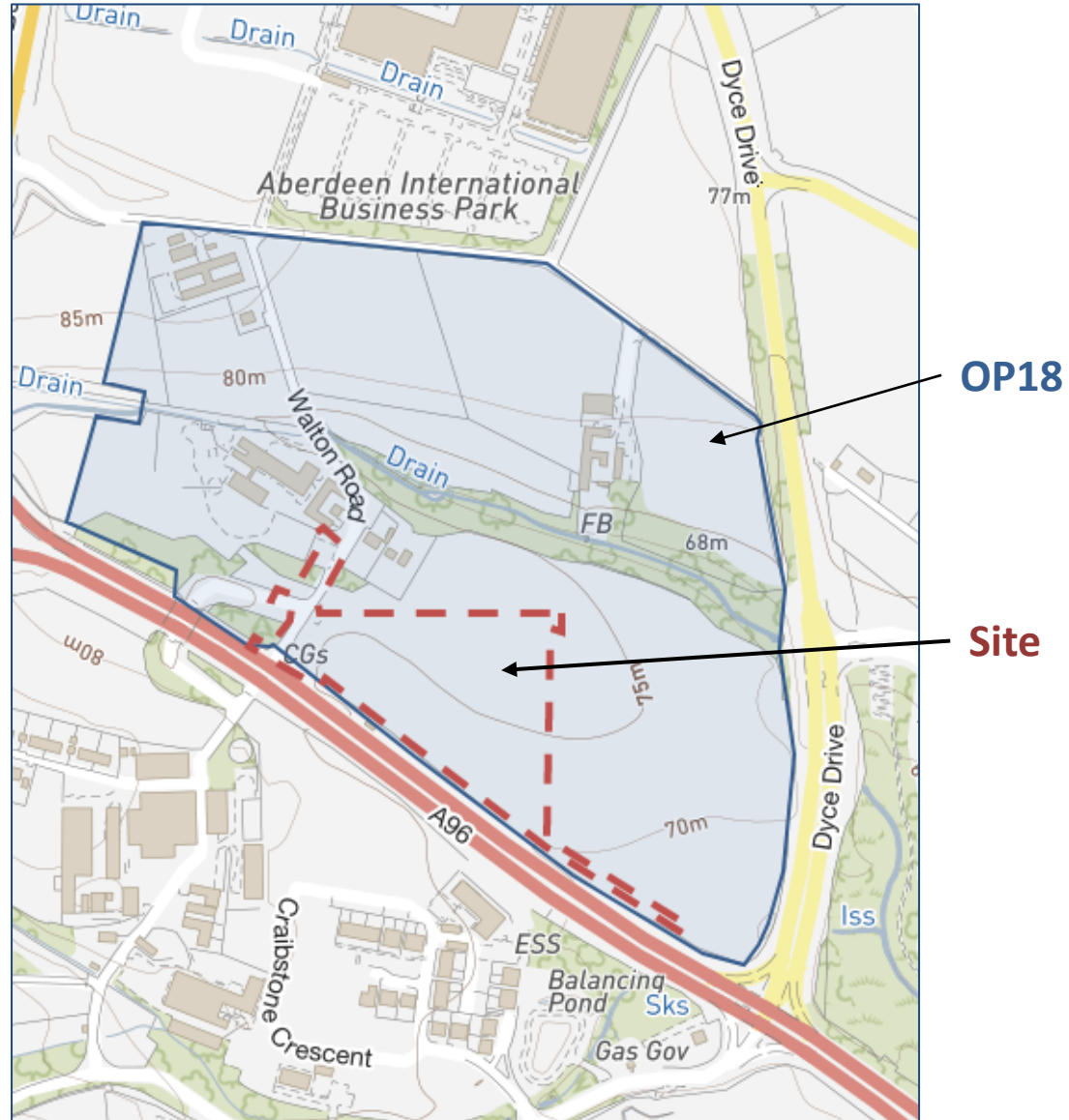




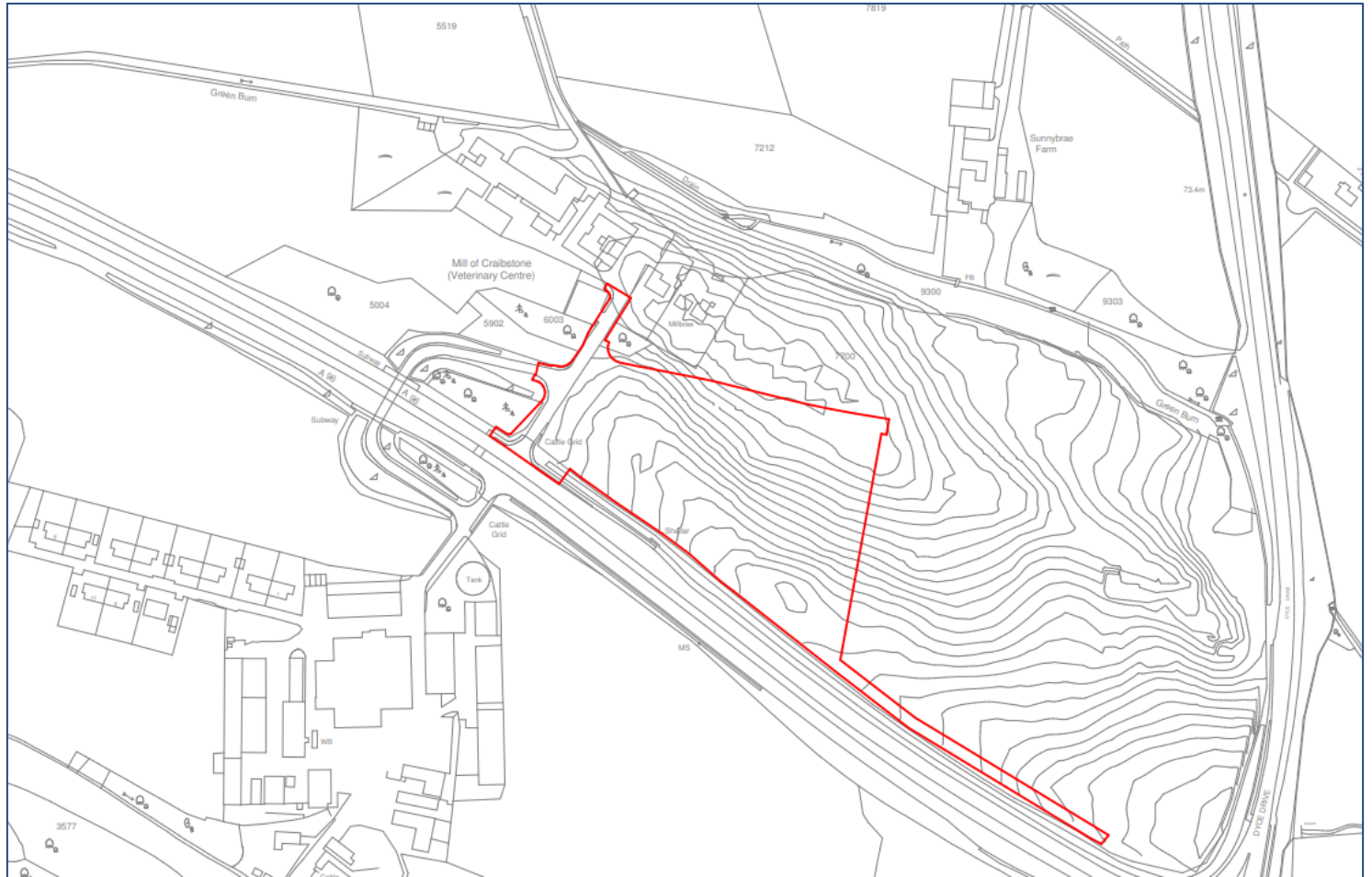
# Site Location – Surrounding Allocations



# Site Location – OP18 & Application Site



# Application Site

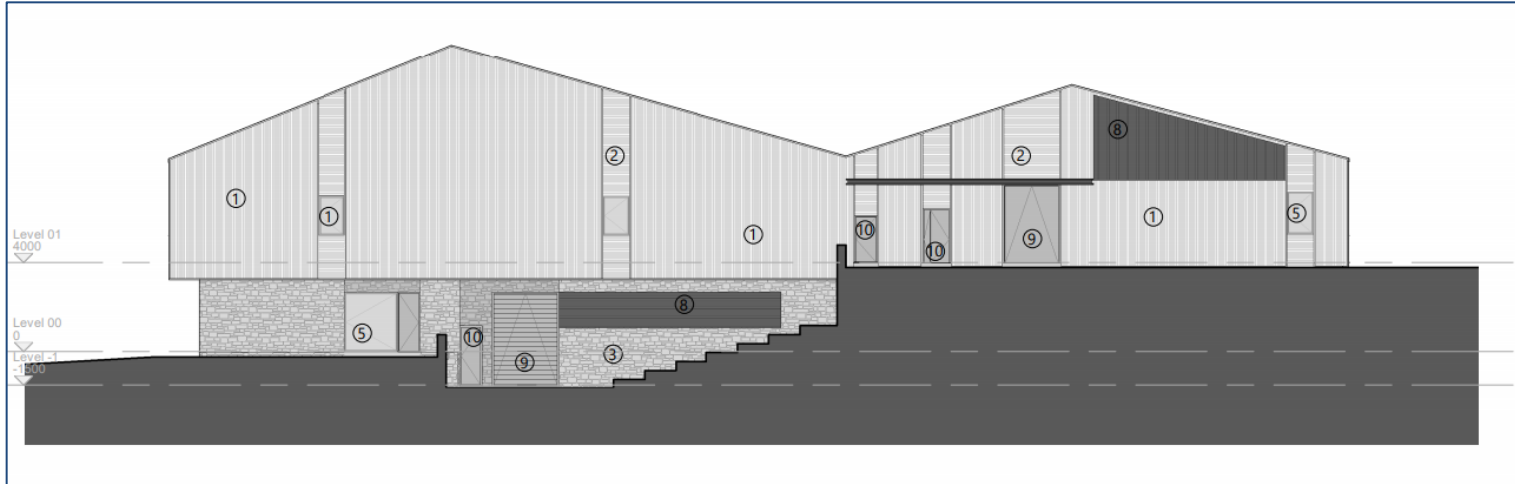




# Site Plan

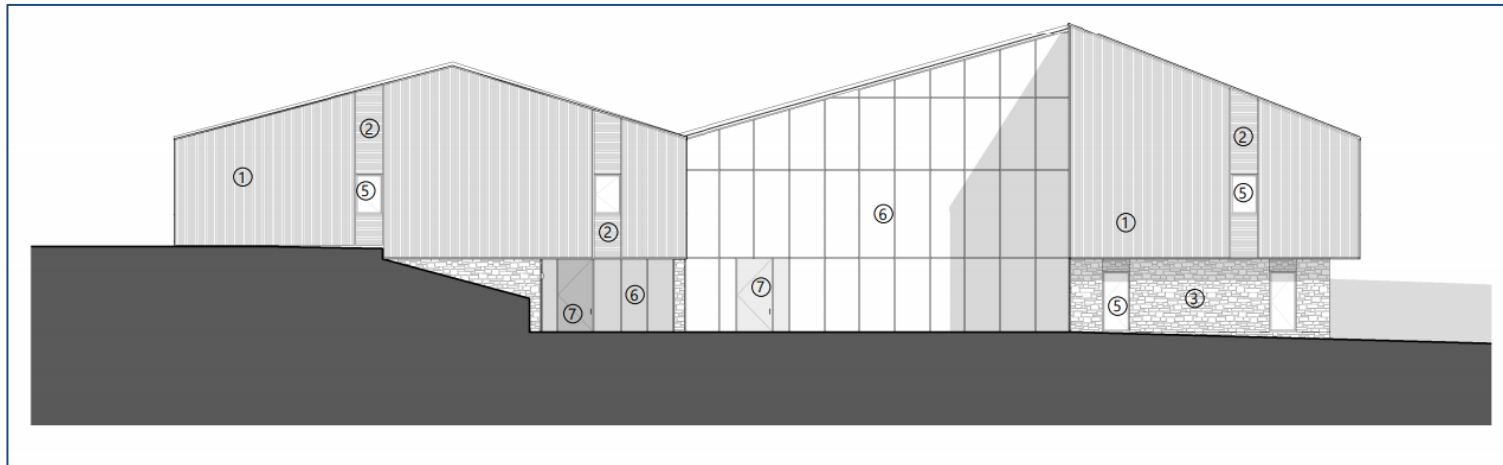


# Elevations



↑ East Elevation

West Elevation ↘

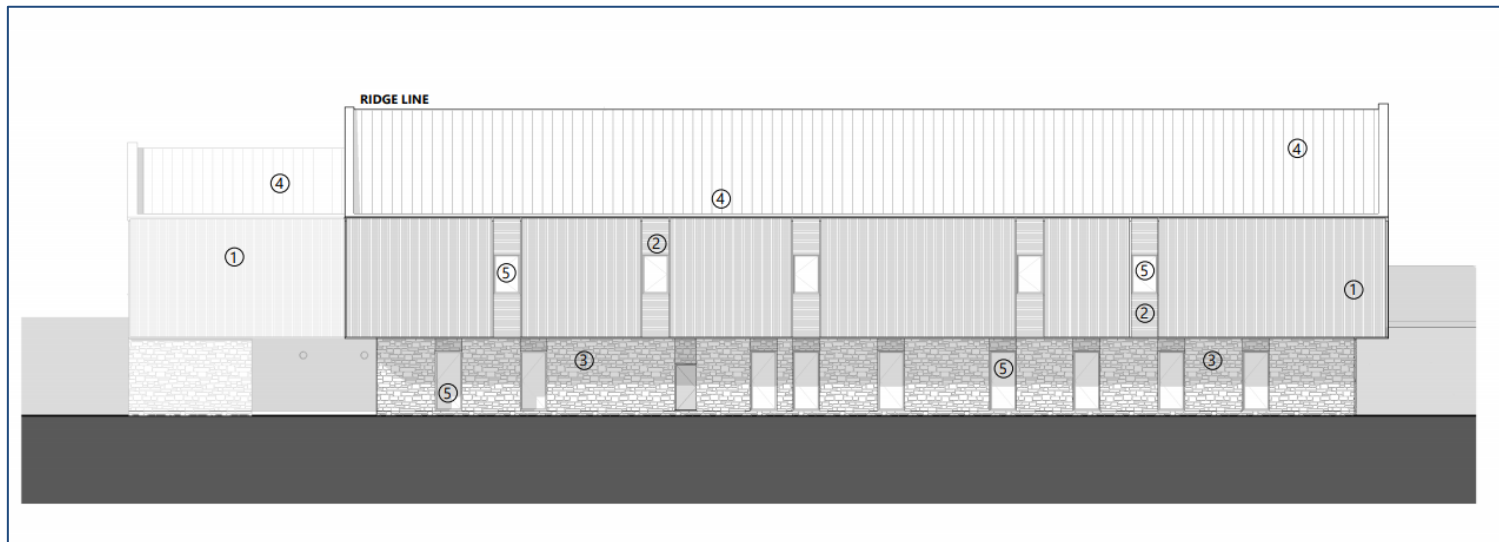


# Elevations



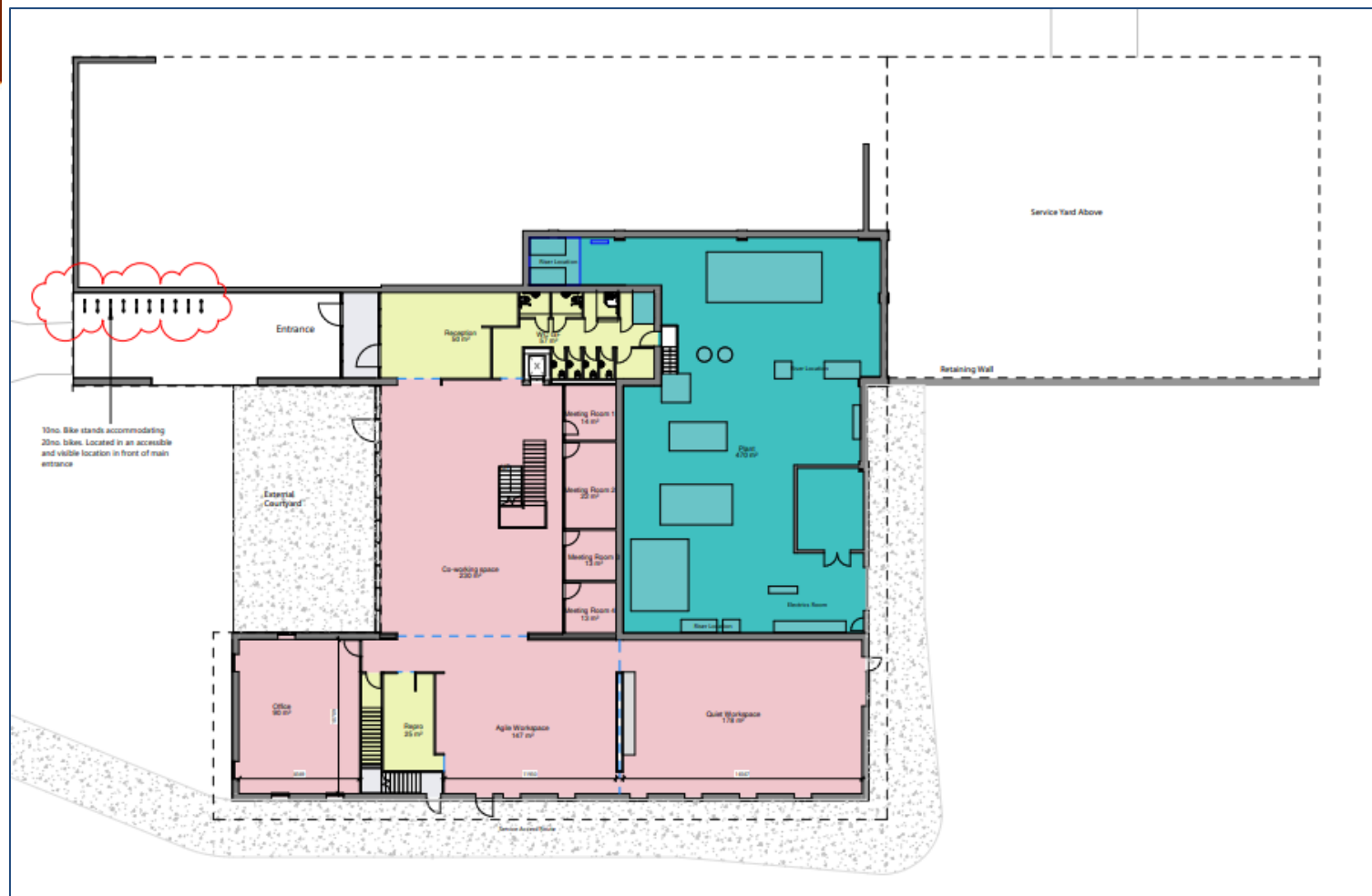
North Elevation

South Elevation





# Ground Floor Plans



# First Floor Plans



# Site Photo

Looking north from opposite side of A96





# Site Photo

Looking east from Walton Road into site





# Site Photo

Looking north east from Walton Road into site





# Site Photo

Looking south towards OP20

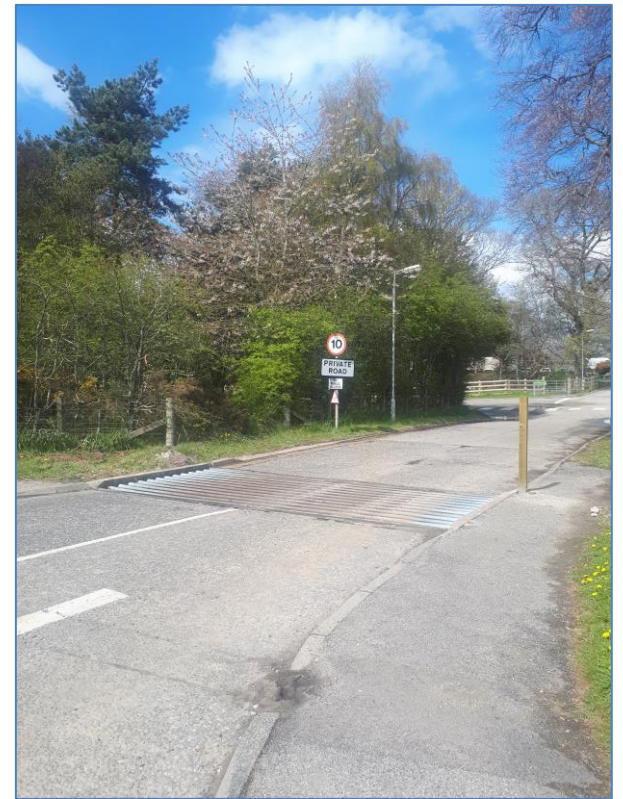






# Site Photos

## Walton Road





# Site Photos

A96

Looking east



Looking west

